

**PRESS RELEASE**

Aug 2024 | Klepp, Norway

## **New Generation of Kubota ploughs: RM6105V**

**Safer transport and higher performances in-furrow and on-land**



*Kubota RM6105V with the Trailer Transport Solution TTS*

**Ploughing is an efficient method for seedbed preparation: it controls weeds, slugs and pest. This is an environmental friendly alternative to chemicals. Ploughing unlocks the full potential of your soils by creating the optimal conditions for plant growth: the ideal balance of air-humus-water content.**

**Kubota presents the RM6105V model: a new generation of mounted reversible plough for in-furrow and on-land operations. This model offers a higher comfort during operations, a safer transport and greater ploughing performances in any soil conditions thanks to smart innovations.**

### **Higher comfort**

The Kubota RM6105V offers the possibility to plough in-furrow and on-land. Swapping from one to another according to the soil conditions is easy. The driver has a finger tip control.

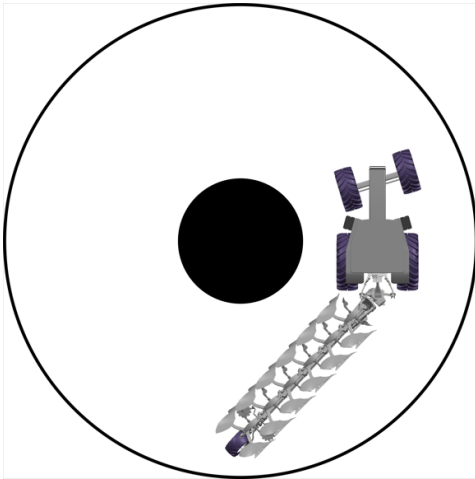
Ploughing on-land limits the risk of soil compaction while benefiting to the comfort of the driver.

At head lands, reversing the plough is soft. This model despite its impressive size requires low lift requirements compared to the equivalent from competition. This smooth movement is also explained

by having an efficient parallel linkage system that moves the plough into a balanced position before reversal. Not least, the wheel turns with a smooth swivel movement.

### **Safer transport (TTS option)**

The Trailer Transport Solution (TTS) means that the plough behaves just like a trailer would behind a car. It is handy. It maximises safety for the driver and for anyone or anything around. The pivot point of tractor and plough combination is located in the middle. Therefore, there is no tilting out. Another advantage is the quick and easy setting. It takes only 1 minute to set the plough from transport to ploughing and vice versa.



### **Higher ploughing performances**

#### **Aero-profile legs – optimise soil flow**

To optimise ploughing in any conditions, the aero-profile design of the legs and the 80 cm under beam clearance improve the soil flow in high residue conditions. Avoiding possible blockages increases the productivity and the ploughing performance.



These robust legs are pre-shaped to limit welding and hence weaknesses. The Auto-reset legs are hollow to optimise the plough weight, lift requirements, pulling forces and hence minimise fuel consumption.

#### **Handy leaf spring system – adapt to soil conditions**

The RM6105V is meant for any soils conditions. It is protected by a Non-stop system using leaf-springs. Add or remove leaf springs to adapt the pressure to the soil conditions.

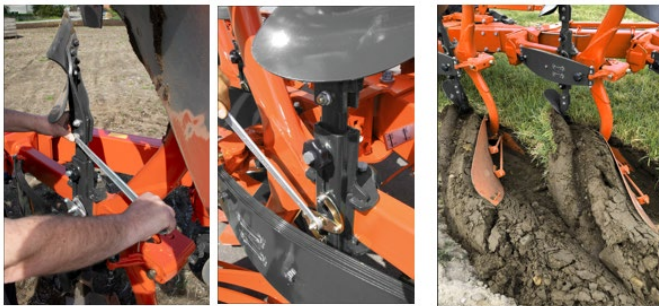
This mechanical leg protection system is maintenance free. No possible leakage. Bodies release independently one to another. They return to the exact depth to guarantee good ploughing performances.





### **Unique skimmer adjustments – adjustable at will**

Skimmers play an essential role in the placement of residues within the soil profile. For this, you can easily adjust the skimmer angle via 1 bolt only. Manure and maize skimmers plus trash boards are available.



Not least, changing the working depth of skimmers is made quick and easy via a central adjustment: right and left working depths adjust simultaneously. These easy settings enable perfect ploughing results.

Disc coulters, plain and notched in 18" (45 cm) and 20" (50 cm), can equip any Kubota ploughs.

### **Rear wheels for the best ploughing results**

The wheel is positioned on the rear for the best stability of the plough and hence for the best ploughing performances.

Several wheels are available: adjustable mechanically or hydraulically.



## Variomat® benefits

The Kubota Variomat® system is activated comfortably from the tractor cabin. It not only increases output but also saves time, fuel and money.

Ploughing and trash burying performances improve too: the Variomat® allows easy adjustments to the preferred working widths “on the move”. Depending on models, it can be adjusted from 30 to 55 cm, offering a massive offset of up to 3,85 m.

Not least, consistent high ploughing results, low pulling forces and low wearing of parts are guaranteed by the Auto-line system: when changing the ploughing width both front furrow width and pulling line adjust automatically. This smart and handy functionality minimizes also the fuel consumption.

The Kubota Variomat® system is maintenance free thanks to a unique non wearing linkage joint between the beams and the mainframe section.

## Specifications

KUBOTA Model	Number of Furrows	Interbody Clearance (cm)
RM6105V (*)	5-6-7	85-100

(\*) 5-7 furrows for 85 cm interbody clearance, 5-6 furrows for 100 cm interbody clearance

For extra agronomical benefits, ploughed soils can be efficiently re-consolidated. A parker arm is available.

Kubota will continue offering ploughs adapted to modern farming while keeping maintenance costs low and ploughing performances high.

Words:752 / Characters including spaces: 4877

## About Kubota

Since its founding in 1890, the Kubota Group has been working to solve social issues through superior products, technologies, and services in the areas of food, water, and the environment. We operate in more than 120 countries around the world, providing solutions to enhance the productivity and safety of food, promote the circulation of water resources and waste, and improve urban and living environments. Under our brand statement "For Earth, For Life," we promise to continue supporting the prosperous life of humans while protecting the environment of this beautiful earth. For more information on the Kubota group, please visit:

<https://www.kubota.com/>.

For further information, please contact

**Arable Systems Division – Product Application Specialits**  
Per Arne Salvesen



Download link to images:



Image [Kubota RM6105V on-land](#)

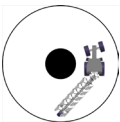


Image [Kubota TTS](#)



Image [Kubota RM6105V studio](#)



Image [Non-stop pressure adjustment](#)



Image [Skimmer angle adjustment](#)



Image [Skimmer depth adjustment](#)



Image [Skimmer work](#)



Image [Kubota RM6105V in-furrow](#)

**Follow us on:**

Website: <https://www.kubota.com> , <https://www.kubota-eu.com>

LinkedIn: <https://www.linkedin.com/company/kubota/>, <https://www.linkedin.com/company/kubota-in-europe/>

Facebook: <https://www.facebook.com/KubotaEurope/>

Instagram: [https://www.instagram.com/kubota\\_in\\_europe](https://www.instagram.com/kubota_in_europe)

YouTube: <https://www.youtube.com/@KUBOTAEurope>